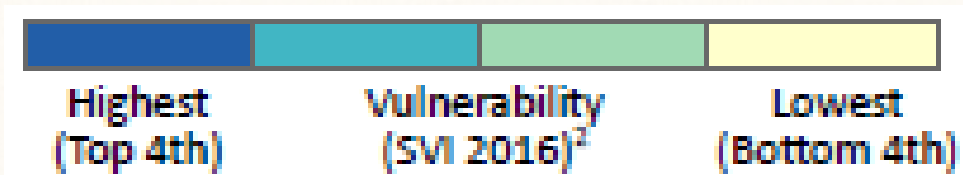




The Social Vulnerability Index and Louisiana Region 6



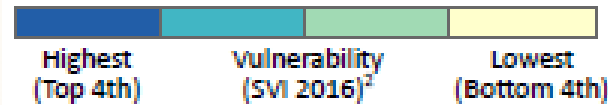
Planning for Vulnerable Populations

Social Vulnerability¹

- Every community must prepare for and respond to hazardous events, whether a natural disaster like a tornado or disease outbreak, or a human-made event such as a harmful chemical spill.
- Factors, including poverty, lack of access to transportation, and crowded housing may weaken a community's ability to prevent human suffering and financial loss in a disaster. These factors are known as **social vulnerability**

¹CDC/ATSDR, 2018 <https://svi.cdc.gov/>

What is the SVI?¹



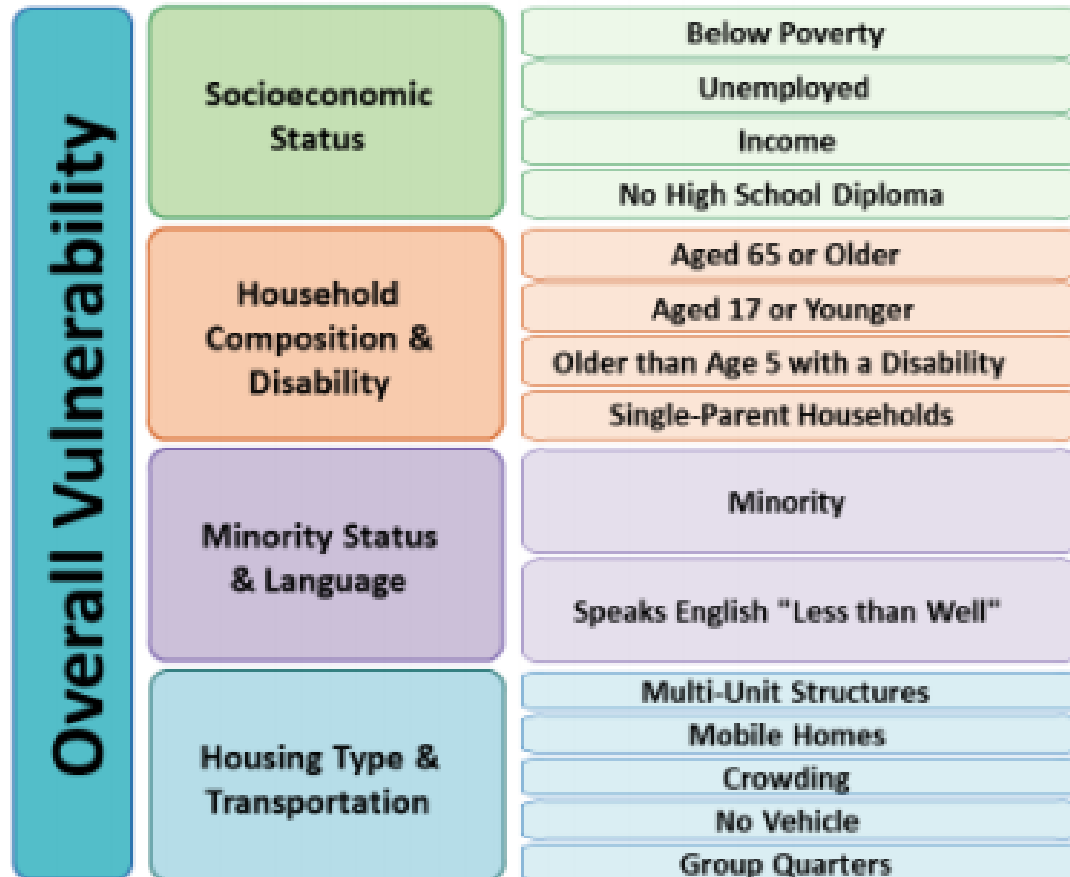
- CDC created databases to help emergency response planners and public health officials identify and map communities that will most likely need support before, during, and after a hazardous event.
- SVI uses U.S. Census data to determine the social vulnerability of every census tract. Census tracts are subdivisions of counties.
- The SVI ranks each tract on 15 social factors and groups them into four(4) related themes.
- Each tract is “mapped” and receives a separate ranking for each of the four themes, as well as an overall ranking.

¹CDC/ATSDR, 2018 <https://svi.cdc.gov/>

Methods

Variables Used

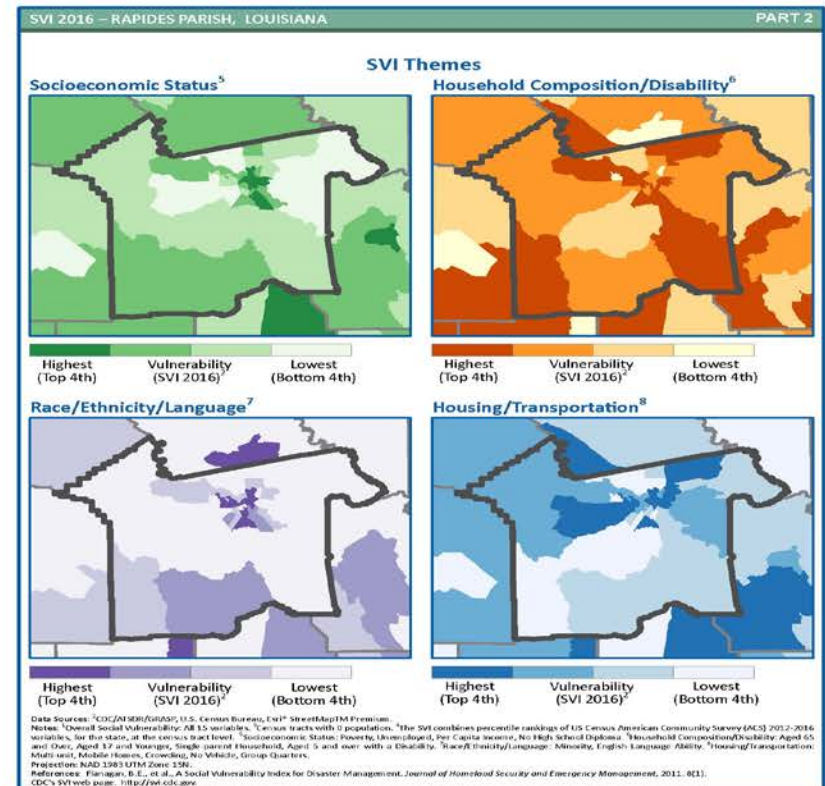
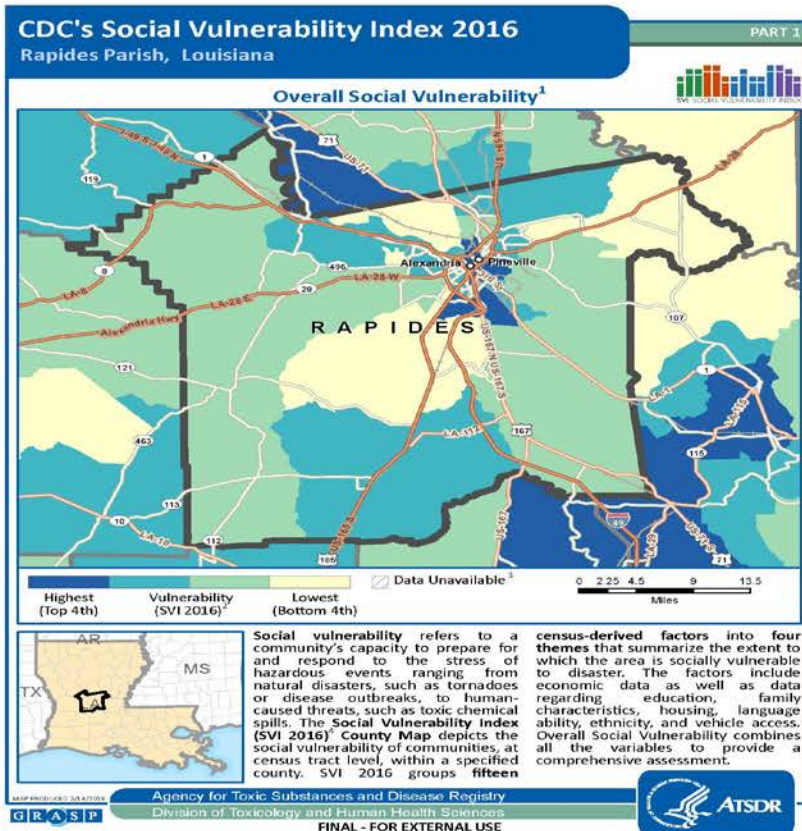
American Community Survey (ACS), 2014-2018 (5-year) data for the following estimates:



Example – Rapides Parish

Overall Ranking

4 Themes Ranked



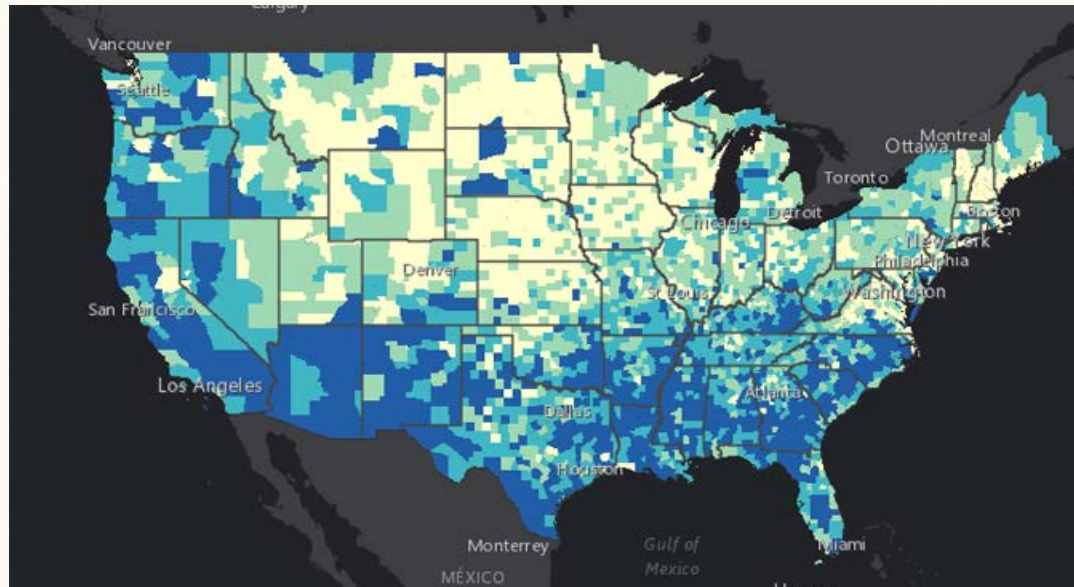
FINAL - FOR EXTERNAL USE

SVI Can Factor into:

- Allocate emergency preparedness funding by community need.
- Estimate the amount and type of needed supplies like food, water, medicine, and bedding.
- Decide how many emergency personnel are required to assist people.
- Identify areas in need of emergency shelters.
- Create a plan to evacuate people, accounting for those who have special needs, such as those without vehicles, the elderly, or people who do not understand English well.
- Identify communities that will need continued support to recover following an emergency or natural disaster.

Accessing SVI

- Home page <https://svi.cdc.gov/>



Navigating

- Go to...
 - <https://svi.cdc.gov/> > Prepared County Maps >
 - Complete the drop-downs > View County Map

The screenshot shows the ATSDR website interface for the CDC's Social Vulnerability Index (SVI). The page title is "Prepared County Maps". On the left, there is a navigation menu with options: SVI Home, Fact Sheet, Data & Tools Download, Publications & Materials, SVI Interactive Map, and Prepared County Maps. The main content area includes a search bar, a "ATSDR A-Z INDEX" dropdown, and a "Download County Maps" section. This section contains three dropdown menus for "Year" (set to 2016), "State" (with a placeholder "Select a state"), and "County" (with a placeholder "Select a state first"). Below these is a "View County Map" button. There is also a "Printing Tips" link and a note about downloading the latest version of Adobe Reader. At the bottom, there is a "File Formats Help" section and a footer with various links and social media icons.

Region 6 – SVI Links

- Winn Parish:
 - https://svi.cdc.gov/Documents/CountyMaps/2016/Louisiana/Louisiana2016_Winn.pdf
- Grant Parish
 - https://svi.cdc.gov/Documents/CountyMaps/2016/Louisiana/Louisiana2016_Grant.pdf
- Vernon Parish:
 - https://svi.cdc.gov/Documents/CountyMaps/2016/Louisiana/Louisiana2016_Vernon.pdf
- Rapides Parish:
 - https://svi.cdc.gov/Documents/CountyMaps/2016/Louisiana/Louisiana2016_Rapides.pdf

Region 6 – SVI Links (continued)

- LaSalle Parish:
 - https://svi.cdc.gov/Documents/CountyMaps/2016/Louisiana/Louisiana2016_LaSalle.pdf
- Catahoula Parish
 - https://svi.cdc.gov/Documents/CountyMaps/2016/Louisiana/Louisiana2016_Catahoula.pdf
- Concordia Parish:
 - https://svi.cdc.gov/Documents/CountyMaps/2016/Louisiana/Louisiana2016_Concordia.pdf
- Avoyelles Parish:
 - https://svi.cdc.gov/Documents/CountyMaps/2016/Louisiana/Louisiana2016_Avoyelles.pdf